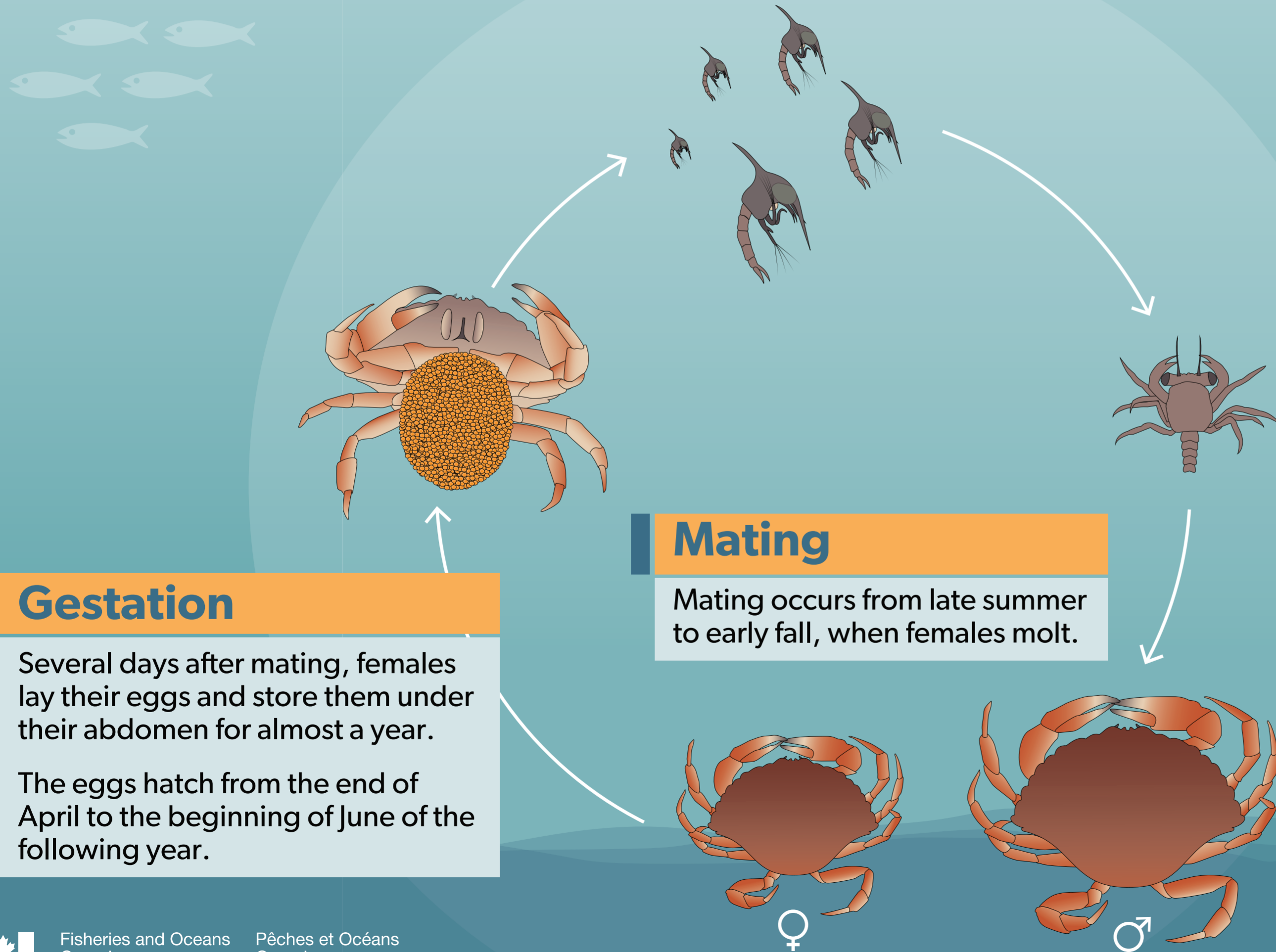


# ATLANTIC ROCK CRAB LIFE CYCLE



## Gestation

Several days after mating, females lay their eggs and store them under their abdomen for almost a year.

The eggs hatch from the end of April to the beginning of June of the following year.

## Mating

Mating occurs from late summer to early fall, when females molt.

## Early life

Over the course of six molts, the larvae grow, transform themselves and increasingly start taking the shape of small crabs.

A young crab in the final stage of the larval phase is called a megalops. It is at this stage that it leaves the water column to go to the seafloor.

## Reaching maturity

Males are mature when they reach a carapace width of about 70 to 75 mm, and females at a carapace width of about 60 mm.

Males and females continue to molt and grow after reaching maturity.