



Gulf of St. Lawrence

Coral and Sponge Marine Refuges

Hard coral



*Flabellum (Ulocyathus)
alabastrum*

Aim to protect

Sponges



Porifera spp.

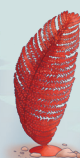
Soft corals: sea pens



*Anthoptilum
grandiflorum*



*Balticina
finmarchica*

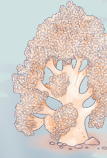


*Ptiliella
grandis*



*Pennatula
aculeata*

Other soft corals



Duva florida

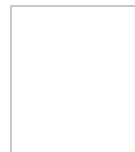


*Gersemia
rubiformis*

Gulf of St. Lawrence

Coral and Sponge Marine Refuges

Protecting the corals and sponges
of the Gulf of St. Lawrence.



For more information

