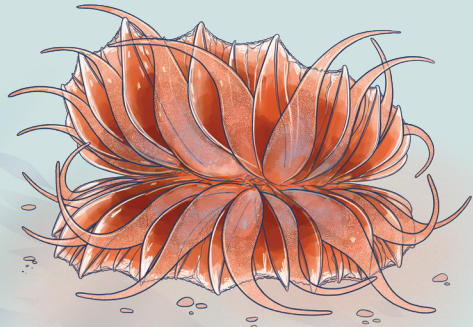




Gulf of St. Lawrence Coral and Sponge Marine Refuges

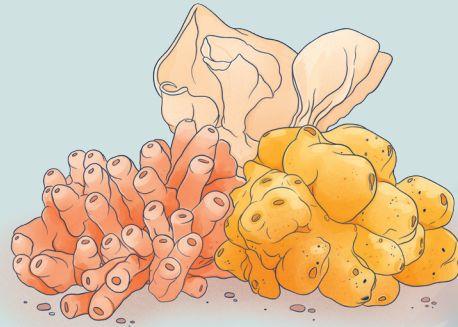
Aim to protect

Hard coral



Flabellum (Ulocyathus) alabastrum

Sponges



Porifera spp.

Soft corals: sea pens



Anthoptilum grandiflorum



Balticina finmarchica

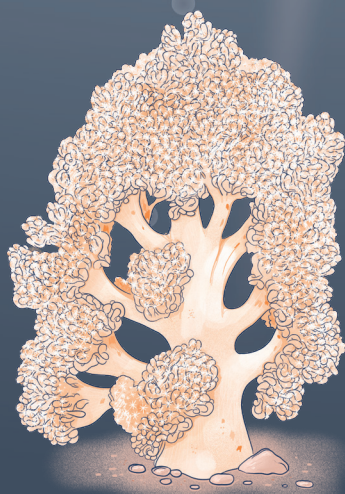


Ptilella grandis

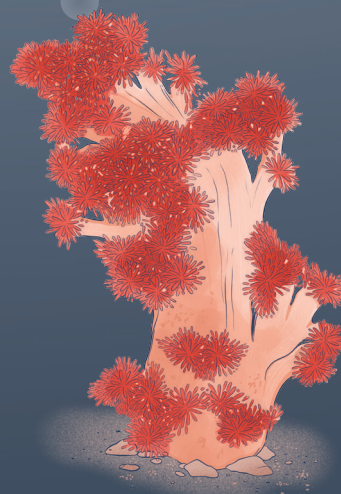


Pennatula aculeata

Other soft corals



Duva florida



Gersemia rubiformis

For more information

